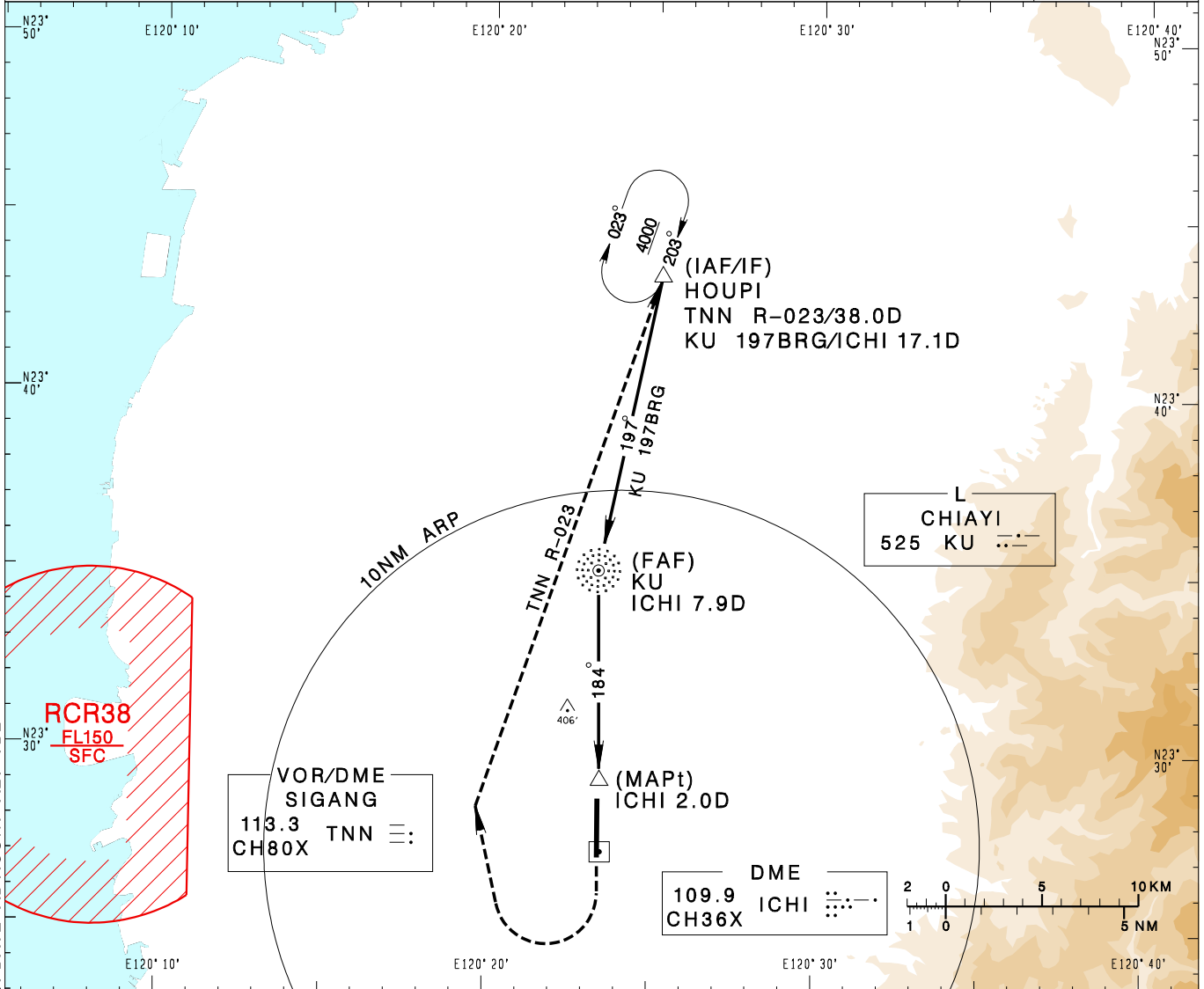


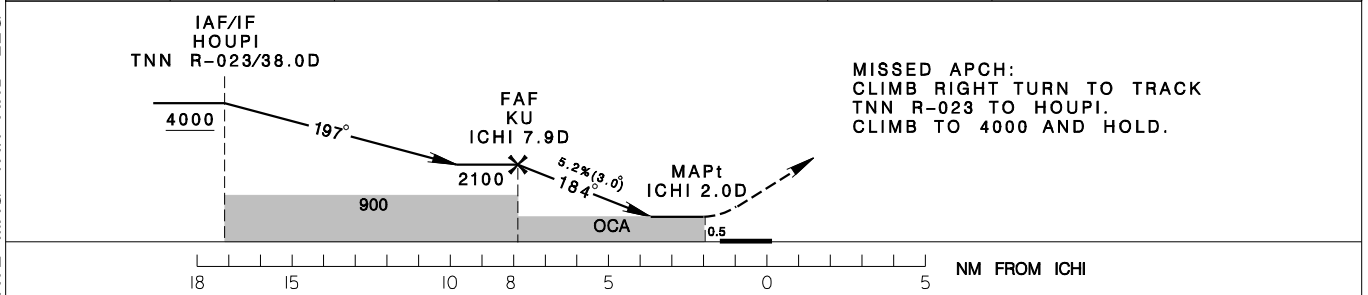
嘉義機場
CHIAYI AD

RCKU
NDB RWY18

| | | | | | |
|--|---------------------|---------------------------------|--------------------|-------------------|------------------|
| KAOHSIUNG APP 120.6 301.0 | | CHIAYI TWR 118.6 236.6 275.8 | | VAR 4°W-2023 ↑ | MSA ARP 25NM |
| Apt Elev: 85' | Rwy18 THR Elev: 75' | Trans Level: FL130 | Trans Alt: 11,000' | | |
| BEARINGS ARE MAGNETIC; DISTANCES ARE NAUTICAL MILES; ELEVATIONS, HEIGHTS IN FEET | | | | | |



| | | | | | | |
|--------|------|------|------|------|--------|--------------|
| 7.9DME | 7DME | 6DME | 5DME | 4DME | 3.3DME | DIST to ICHI |
| 2110 | 1840 | 1530 | 1220 | 910 | 670 | ADVISORY ALT |



| MINIMA (OCA IN FT, VIS IN M, OCH IN FT) | | | | | NOTE 1. CIRCLING NOT AUTHORIZED EAST OF RUNWAY. 2. TRAFFIC FROM SOUTH JOIN HOUPI HOLDING PATTERN FOR COURSE REVERSAL. * DME REQUIRED |
|---|--------------|--------------|--------------|--------------|---|
| CATEGORY | A | B | C | D | |
| STRAIGHT IN | 670/1600 595 | 670/1600 595 | 670/3100 595 | 670/3100 595 | |
| CIRCLING | 670/1900 585 | 720/2800 635 | 820/3700 735 | 940/4600 855 | |

CHANGES: OCA; UPDATE MAG VAR AND LEG CRS; UPDATE ADVISORY ALT TBL